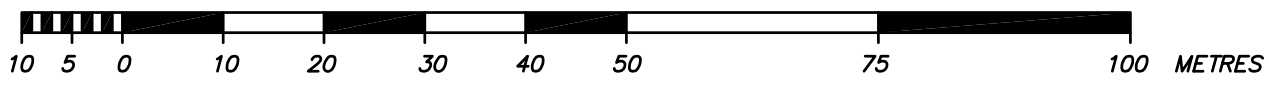


**SUBDIVISION PLAN OF THE NORTH WEST 1/4 SECTION 27 TOWNSHIP 20 ODYD
EXCEPT PLANS KAP80373, KAP85099, KAP85106, KAP87597, KAP87826, KAP89902,
KAP90921, KAP91755, EPP19122, EPP30019, EPP40830, EPP46380, EPP49689 AND EPP61139**

PLAN EPP63611

BCGS 82L.003



The intended size of this plan is 560 mm in width by 864 mm in height (D size) when plotted at a scale of 1:750.

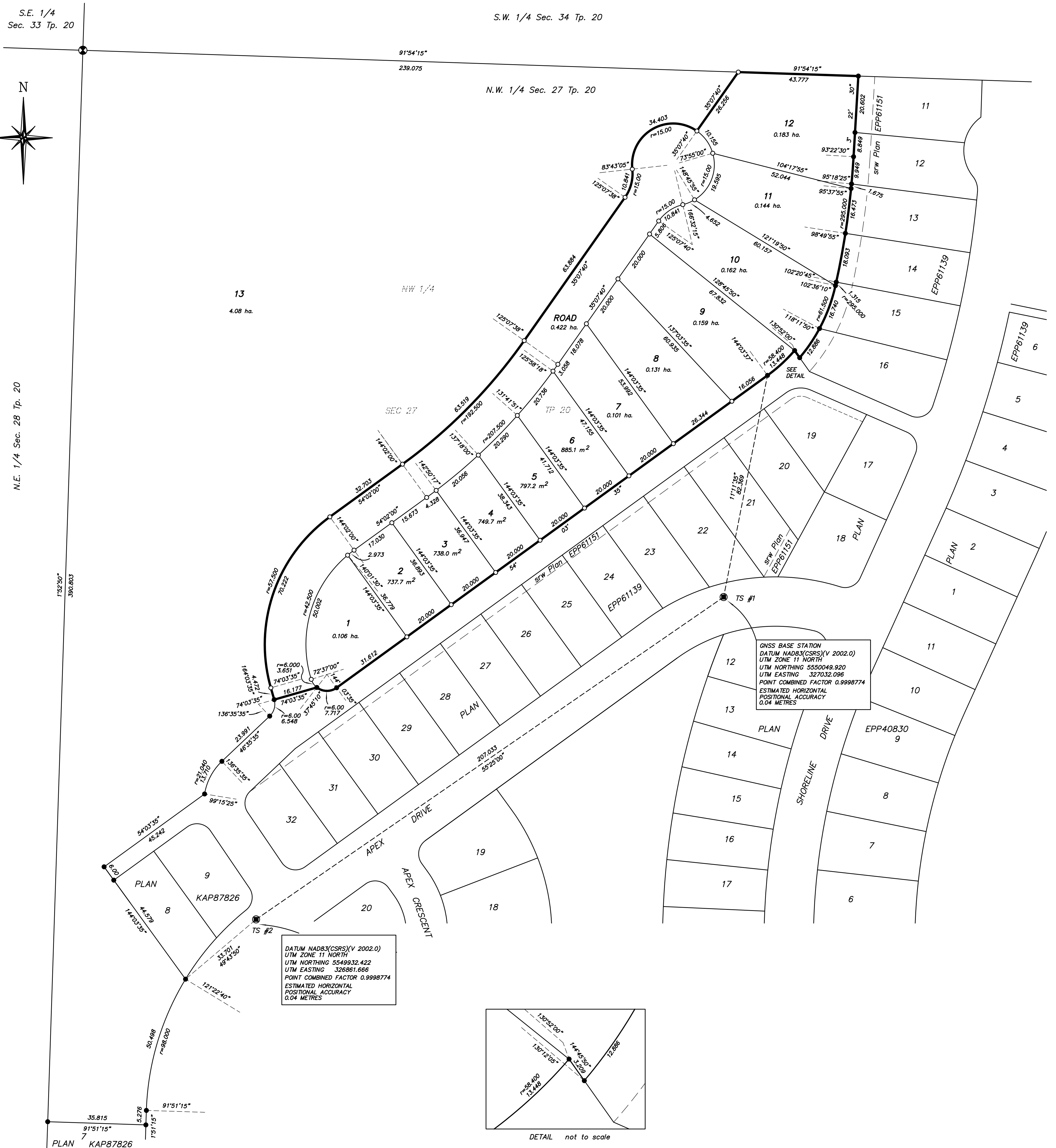
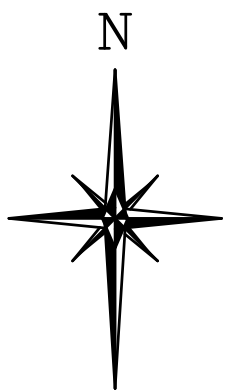
LEGEND

- Iron Post Found
- Iron Post Set
- ⊙ Capped Iron Post Found
- ⊙ Rock Post Found

S.E. 1/4
Sec. 33 Tp. 20

S.W. 1/4 Sec. 34 Tp. 20

N.W. 1/4 Sec. 27 Tp. 20



N.E. 1/4 Sec. 28 Tp. 20

1°52'30"

U.T.M. coordinates are derived by autonomous static dual-frequency GNSS observations and processed using Natural Resources Canada's precise point positioning service.

This plan shows horizontal ground-level measured distances except where otherwise noted. To compute grid distances, multiply ground-level distances by average combined factor 0.9998774. The average combined factor has been determined based on an ellipsoidal height of 573.609 m.

U.T.M. (NAD83 CSRS V. 2002.0) grid bearings are derived from differential carrier phase GNSS observations between traverse stations and are referred to 117° west longitude, the central meridian of Zone 11 North.

This plan lies within the Central Okanagan Regional District.

This plan lies within the jurisdiction of the approving officer for the District of Lake Country.

The field survey represented by this plan was completed by D.A. Goddard BCLS CLS on the day of April, 2016.

12178 PHASE 10 SUB

D.A. Goddard Land Surveying Inc.
103-1358 ST. PAUL STREET KELOWNA PHONE 250-763-3733